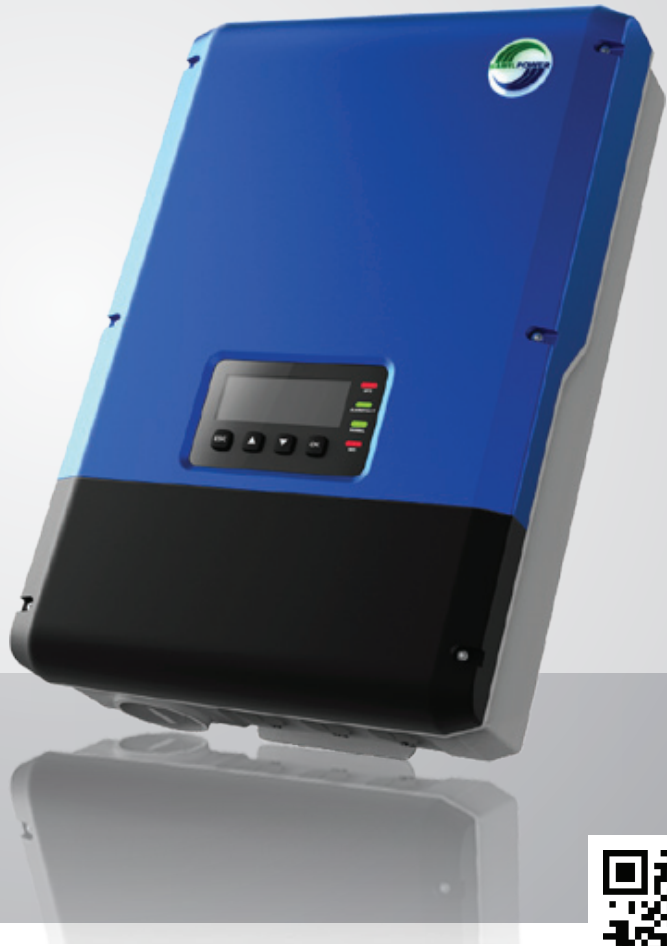




DC Switch Integrated ▶



PV Grid-tied Inverter (Single phase)

SolarRiver 3000TL-US/4000TL-US/5000TL-US/6000TL-US

LEADING-EDGE TECHNOLOGY

- Dual MPPT inputs accommodating wide voltage range
- Transformerless topology - minimizing noise and weight
- Communication port (RS485, ethernet, Wi-Fi)
- Max. efficiency 97.8%

FLEXIBILITY

- Suitable for indoor and outdoor (NEMA 3R)
- Flexible MPPT mode for different installations
- User-friendly and easy-setting multi-lingual LCD display screen
- Easy configuration for local grid standards
- Anti-theft protection

BUILT TO LAST

- Comprehensive protection (DC switch integrated, ground fault detection, DC wrong polarity protection, AC short-circuit protection, anti-islanding protection)
- High-quality aluminum die-casting frame
- 10 years product warranty

CERTIFICATES

- UL1741, IEEE 1547, FCC Part 15 (Class A&B), CSA C22.2 No.107.1-2001

Datasheet of SolarRiver-US Series

| Inverter model | SolarRiver 3000TL-US | SolarRiver 4000TL-US | SolarRiver 5000TL-US | SolarRiver 6000TL-US |
|--|--------------------------------|--------------------------------|---|---|
| Input (DC) | | | | |
| Max. DC power [W] | 3500 | 4600 | 5750 | 6800 |
| Max. DC voltage [V] | | | 550 | |
| DC nominal voltage [V] | | | 400 | |
| Max. input current [A] | 17.5 | 11+11 | 14.5+14.5 | 17.5+17.5 |
| Numbers of MPPT/ Strings per MPPT | 1/2 | 2/(2+2) | 2/(2+2) | 2/(2+2) |
| MPPT voltage range [V] | | | 200-500 | |
| Min. operating voltage/ Initial operating voltage [V] | | | 100/150 | |
| Output (AC) | | | | |
| Max. continuous AC power [W] | 3000 | 4000 | 5000 | 6000 |
| Max. AC power [W] | 3300 | 4400 | 5500 | 6600 |
| Max. AC current [A] | 14.5/208V; 12.5/240V | 19/208V; 17/240V | 24/208V; 21/240V | 29/208V; 25/240V; 22/277V |
| Nominal AC voltage [V] | 208; 240 (standard) | 208; 240 (standard) | 208; 240 (standard) | 208; 240 (standard); 277 |
| AC max. voltage range [V] | 183-229; 211-264 (standard) | 183-229; 211-264 (standard) | 183-229; 211-264 (standard) | 183-229; 211-264 (standard); 244-305 |
| AC nominal frequency/ Max. frequency range [Hz] | | | 60/59.3-60.5 | |
| Power factor (cos ϕ) | | | >0.99 | |
| THDi (at nominal power) | | | <3% | |
| Efficiency | | | | |
| Max. efficiency | 97.6% | 97.7% | 97.8% | 97.8% |
| CEC efficiency | | | 97% | |
| MPPT efficiency | | | >99.5% | |
| General Data | | | | |
| Dimensions (W×H×D) [mm/in] | | | 380×580×203/15×23.8×8 | |
| Weight [kg/lb] | 26/57.3 | 27.5/60.6 | 29/64 | 30/66 |
| Operating temperature range [°C/°F] | | | -25-+60°C/-13-+140°F | |
| Ingress protection (IP) | | | NEMA 3R (IP65) | |
| Topology | | | transformerless | |
| Night consumption [W] | | | <1 | |
| Cooling | Convection | Fan | Fan | Fan |
| Noise [dB] | <40 | <45 | <45 | <50 |
| LCD display | | | 2 row Character LCD (no operation at night) | |
| Communication | | | Ethernet (standard)/RS485 (standard)/Wi-Fi (optional) | |
| Altitude | | | 2000m/6562ft | |
| Rel. humidity | | | 0-95% | |
| DC switch | | | Integrated | |
| Warranty (10/15/20 years) | | | standard/optional/optional | |
| Certificates | | | UL1741, IEEE 1547, FCC Part 15 (Class A&B), CSA C22.2 No.107.1-2001 | |

